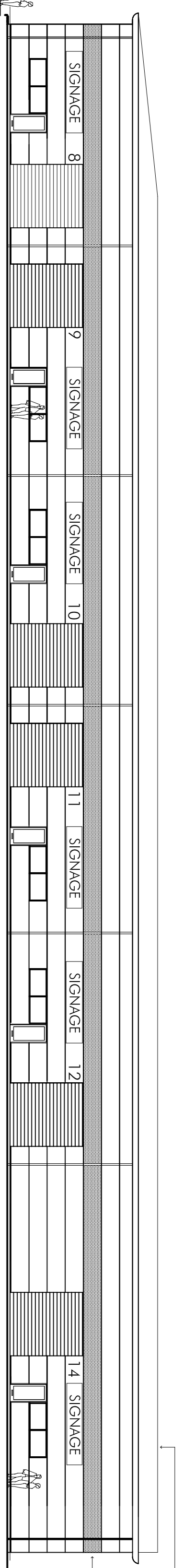
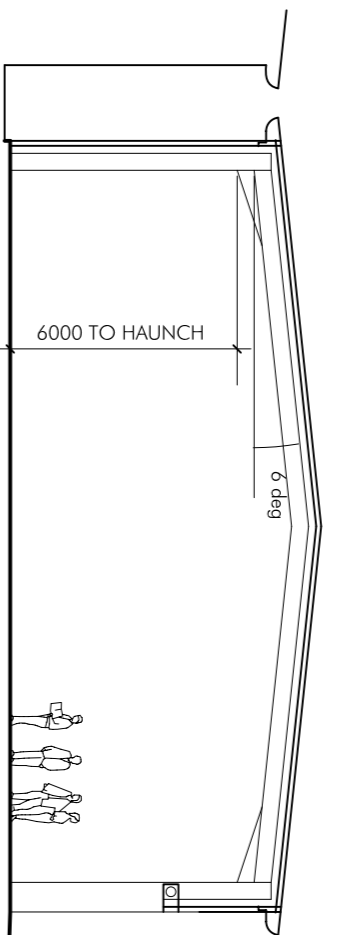


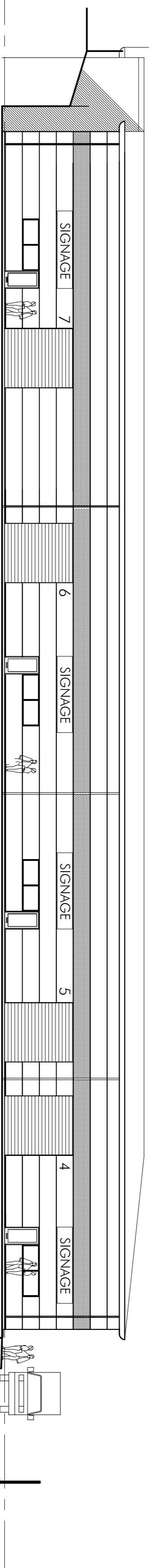
SECTION (8-14)



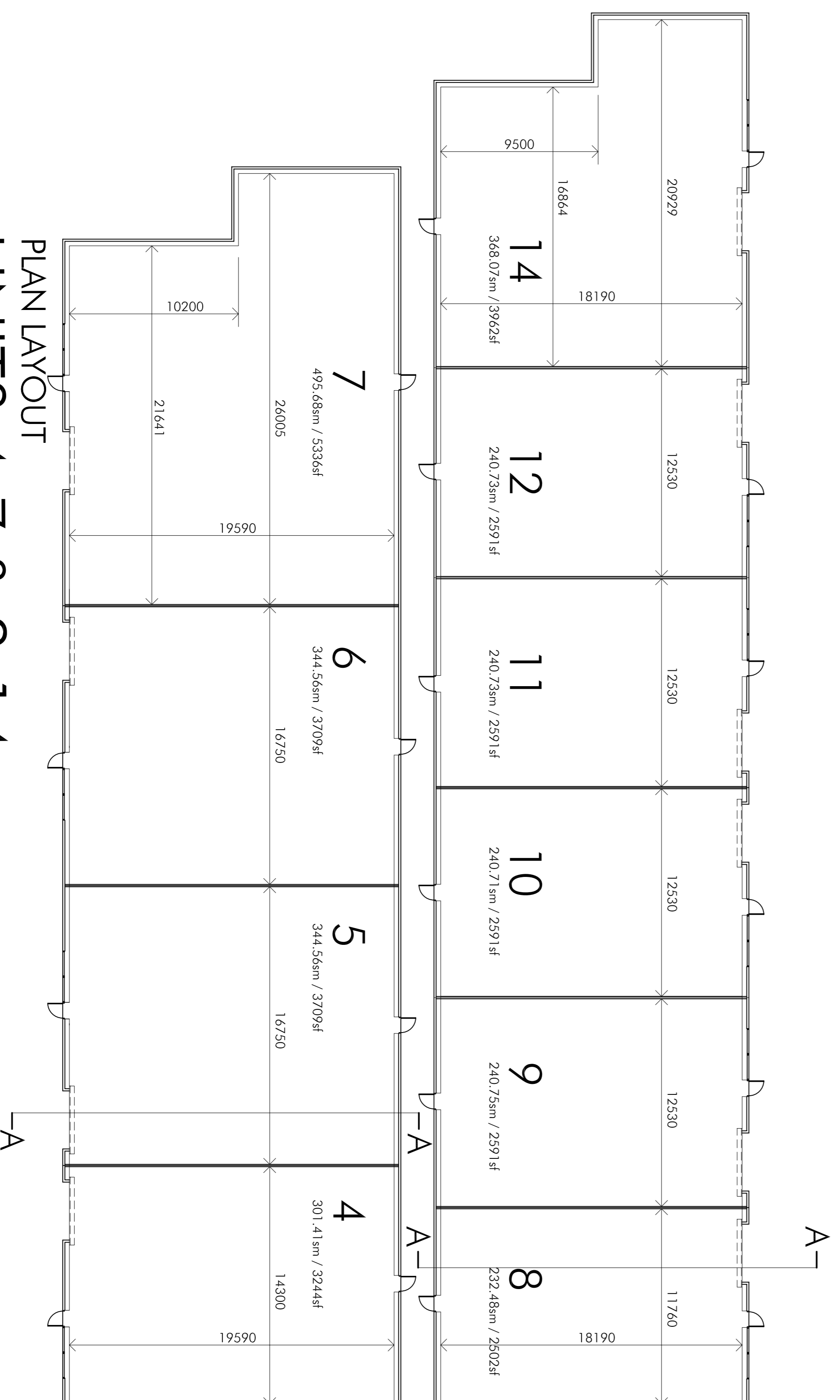
NORTH EAST (8-14)



SECTION (4-7)

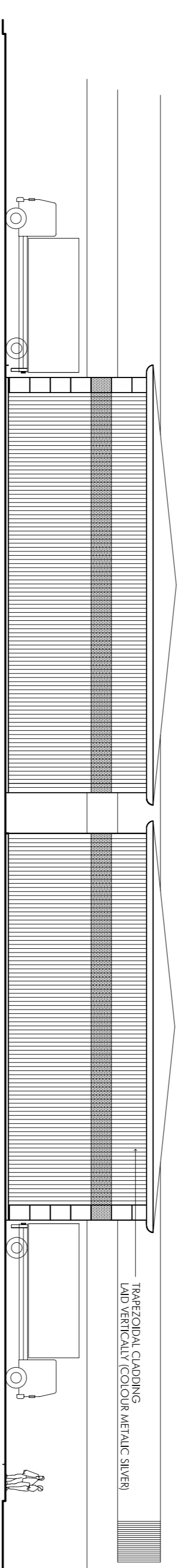


SOUTH WEST (4-7)

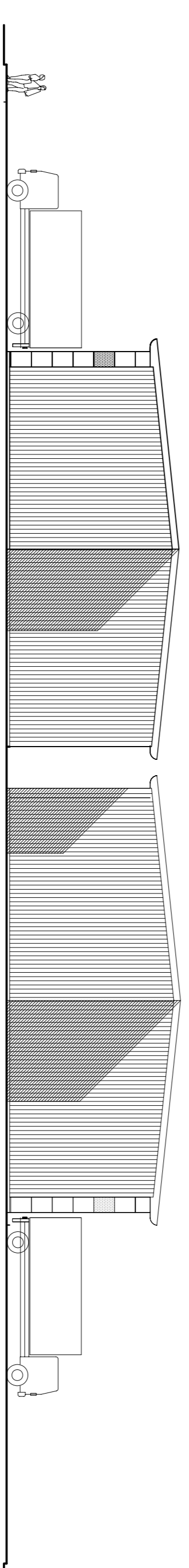


PLAN LAYOUT
UNITS 4-7 & 8-14

NOTE: ABOVE SIGNAGE ARE CROSS SECTIONAL



SOUTH EAST



NORTH WEST

Profiled aluminium gutter and brackets to be used in preference to steel zinc plated gutter and brackets. All guttering and brackets to be powder coated in the same colour as the building facade. Composite meteoric paper lad vertical cladding to be used in preference to steel zinc plated cladding. Sectional overhead doors to be used in preference to steel zinc plated doors. All signage to be powder coated in the same colour as the building facade. © COPYRIGHT 2008

REVISIONS

PMIDG ARCHITECTS
1717 05

NECHELLS PLACE
UNITS 4-7 & 8-14
PLANS & ELEVATIONS

SCALE: 1:200(A1)
DRAWN: BF/CK
DATE: 02/10/2008
1717 05

